



■ Specification

- Metal : Stainless steel 316L
- External shape : Pellet (φ2.5mm, 5 - 7mm)
- Mass : ~ 0.2 g/piece
- Density : ~ 5.6 g/cc
- Fluidity : 100 - 200 g/10 min (MFR)
(180°C - 5kgf)

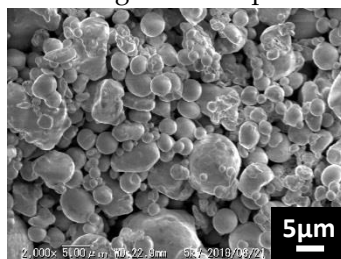
■ Characteristics (Sintered component)

- Shrinkage factor : ≥ 16 %
- Density : ≥ 7.5 g/cm³
- Hardness : ≥ 200 Hv
- Elongation : ≥ 30 %
- Tensile strength : ≥ 480 MPa
- Surface roughness : $\leq Ra 0.8$ μm

Appearance



SEM image of metal powder



Metal composition (wt.%)

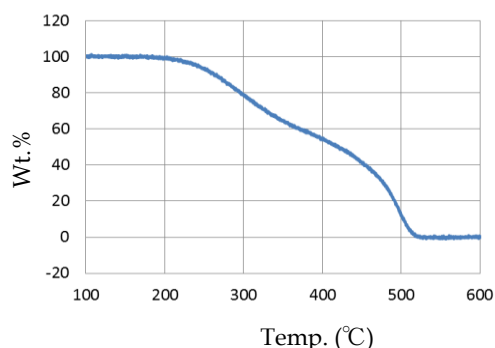
Composition	C	Si	Mn	P	S	Ni	Cr	Mo	Fe
SUS 316L	≤ 0.03	≤ 1.00	≤ 1.00	Max 0.045	Max 0.030	12.00 - 15.00	16.00 - 18.00	2.00 - 3.00	Bal.

■ Recommend process conditions

- Molding temperature : 160 - 190°C
- Debinding temperature : Refer the TG graph
- Sintering temperature : 1100 - 1300°C
(Non-oxidizing atmosphere)

Remark

The molding and sintering conditions must be optimized according to product



Thermal gravity analysis (TG) data (Ar atm)

■ Recommended storage conditions

- Temperature : 20 - 30°C
- Humidity : ≤ 50 % RH
- Expiration date : approx. 6 months (Under the recommended conditions)

Disclaimer

- Micro MIM Japan will accept no responsibility for any components quality or the product quality, which are made of this feedstock.
- Micro MIM Japan is not liable for any production process judgement from this feedstock user.
- The above values are standard. Please understand it is not the guaranteed value.

